



# RS232

## Bluetooth™ Converter

### Features

- 3 wire operation
- Integral Antenna
- Secure: Requires bonding/pairing
- Can be configured as a 'pair' offering TRUE cable replacement
- Configured for connection to 'devices' rather than PCs. Can be connected to PCs/modem using gender changer (supplied).

### Specifications

- Max Current: 120mA
- Power Requirements: External power adaptor supplied (200mA @ 5V)
- Baud rates: 115,200
- Data Bits: 8
- Stop bits: 1
- Parity: None
- Size: 3.8cm x 7.8cm
- Weight: 68g

### Configuration Options

- Baud Rate: Select from list or enter custom. Available rates 244 baud - 1.38 Mbaud (multiples of 244)
- Stop bits: 1 or 2
- Parity: Odd, even, none, mark or space
- Data bits: 8 only
- Profile Behaviour: Client Server (DevA, DevB)
- Bonding: Enable/disable/link key expiry. Manually enter remote address
- Pin: Select from list or enter custom (8 character limit)
- Local Name: Select from list or enter custom (31 character limit)
- Menu: enable/disable/allow automated configuration

**Note:** Settings are only applied on device reset or user confirmation.

### Notes

- This product is supplied with a 9 pin gender changer.
- Also available as a module (BL-730) without cable / case - to easily Bluetooth enable legacy devices.

Bluetooth™ is a trademark owned by its proprietor and used by Brainboxes Limited under license

### Description



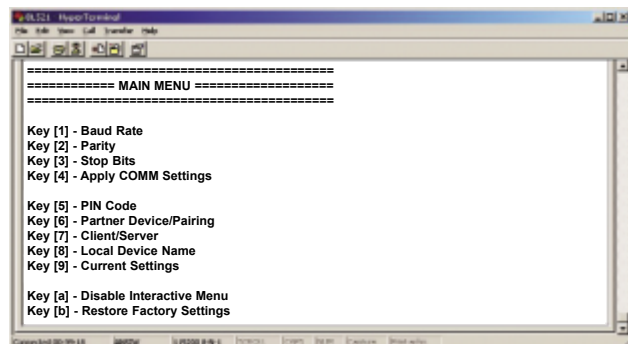
The Brainboxes RS232 Converter allows any device with an RS232 port to communicate with another Bluetooth device without the need for additional Bluetooth software, making it ideal for Bluetooth enabling 'dumb' RS232 devices such as printers/scanners etc. It is based on fully tested Bluetooth silicon, allowing communications at the full Bluetooth data rates. The antenna for the board is built into the PCB.

This product is part of a wide range of Bluetooth products available from Brainboxes including Type I CompactFlash, USB and Type II PCMCIA.

**Simple to use - be up and running within 10 minutes!**

### Software/Configuration

The BL-521 does not require any software. It has a simple to use 'bulletin-board' style configuration menu, meaning its settings can be changed from any Operating System without the need for a specific configuration application.



### ORDER

#### Description

RS232 Bluetooth Converter  
RS232 Bluetooth Converter Module

#### Code

BL-521  
BL-730